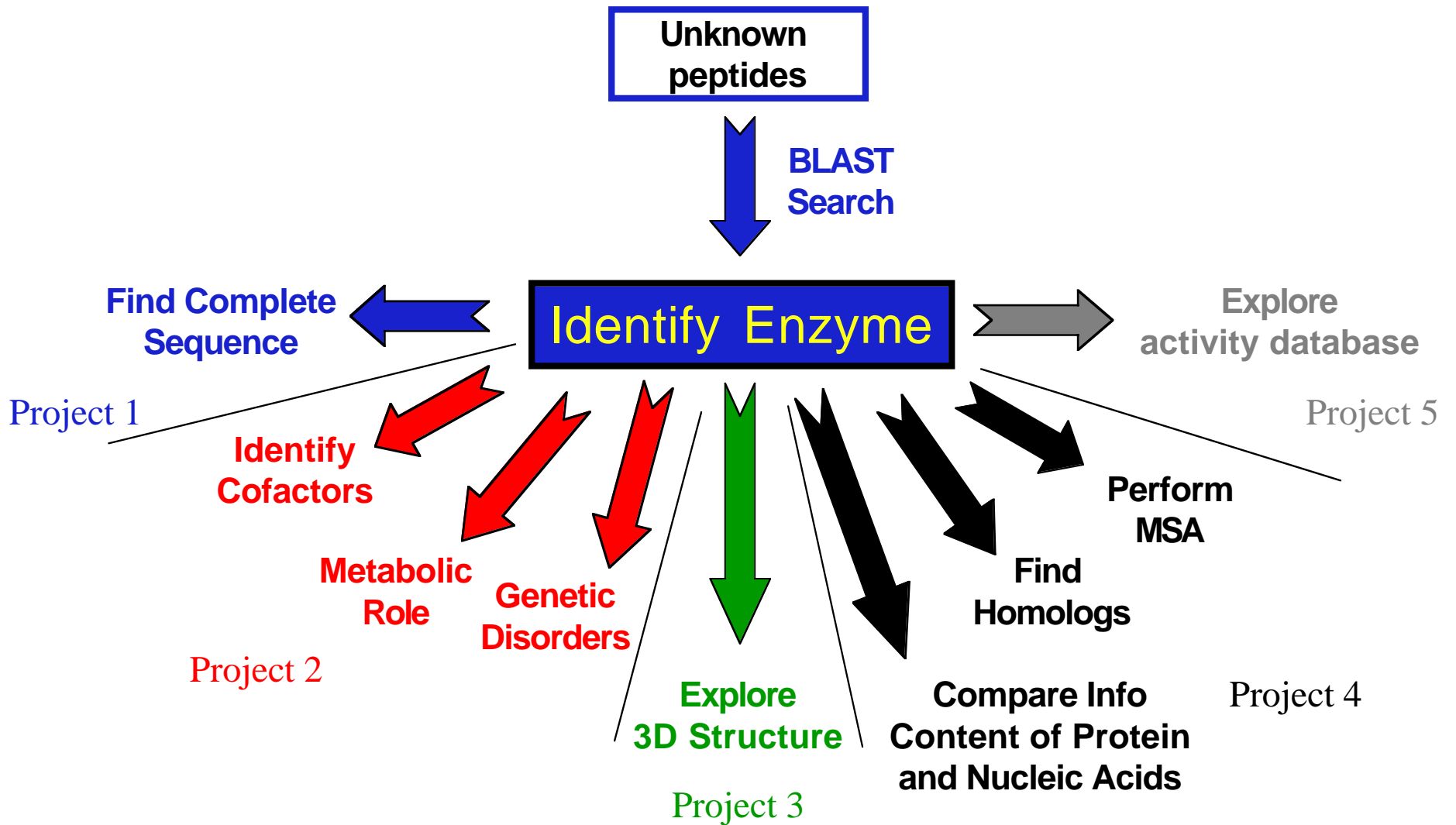


Feig and Jabri - Figure. 1



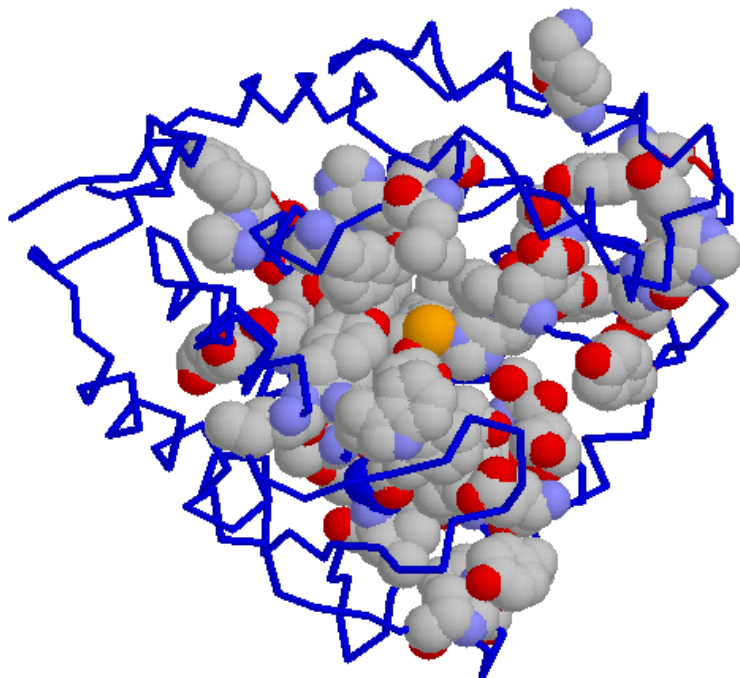
Feig and Jabri - Figure 2

A.

sp   P16331   PH4H_MOUSE	DVSQFLQTCTGFRLRPVAGLLSSRDFLGGLAFRVF	HCTQYIRHGSKPMYTPEPDICHELL
sp   P04176   PH4H_RAT	DVSQFLQTCTGFRLRPVAGLLSSRDFLGGLAFRVF	HCTQYIRHGSKPMYTPEPDICHELL
sp   P00439   PH4H_HUMAN	DVSQFLQTCTGFRLRPVAGLLSSRDFLGGLAFRVF	HCTQYIRHGSKPMYTPEPDICHELL
1PAH__	DVSQFLQTCTGFRLRPVAGLLSSRDFLGGLAFRVF	HCTQYIRHGSKPMYTPEPDICHELL
sp   P17276   PH4H_DROME	DVSNFLRDCTGFLLRPVAGLLSSRDFLAGLAFRVF	HSTQYIRHPSKPMYTPEPDVCHELM
sp   P90925   PH4H_CAEEL	DVSDFLKDCTGYTIRPVAGLLSSRDFLAGLAFRVF	HSTQYIRHHSAPKYTPEPDICHELL
sp   P43334   PH4H_PSEAE	EINRVLQATTGWRVARVPALIPFQTFELLASQQF	PVATFIRTPEELDYLQEPDIFHEIF
sp   P30967   PH4H_CHRVO	KLNEKLMAATGWKIVAVPGLIPDDVFFEHLANRR	FPTWWLREPHQLDYLQEPDVFDLF
	... * ** : : *..*:. * : ** : * : ::* * ** : *:::	

229 291

B.



C.

**Overall alignment statistics:**

**Alignment length : 468**

**Identity (\*) : 49 is 10.47 %**

**Strongly similar (:): 44 is 9.40 %**

**Weakly similar (.) : 18 is 3.85 %**

**Different : 357 is 76.28 %**