

NAME: _____

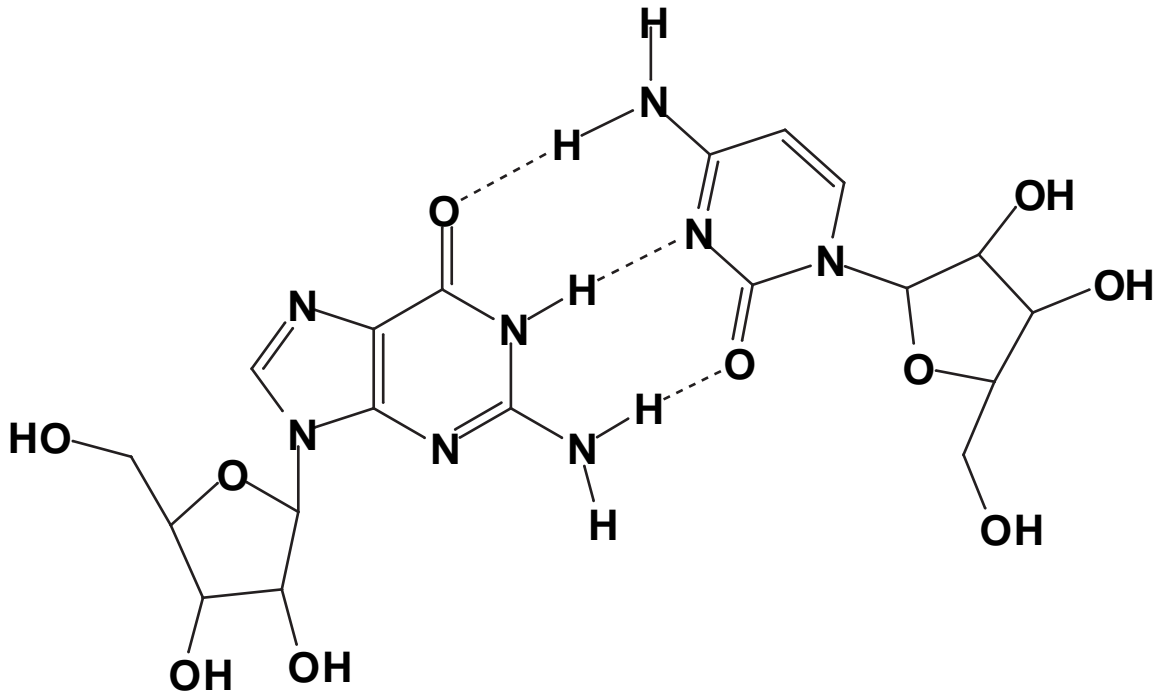
1) Draw a G-C base pair. (If you do not know how the two bases come together, draw them separately for partial credit.) (4 pts)

2) Draw the structure of uracil. (1 pt)

Bonus: Next to your structure of uracil, show the tautomerization reaction and the subsequent product formed. (2 pts)

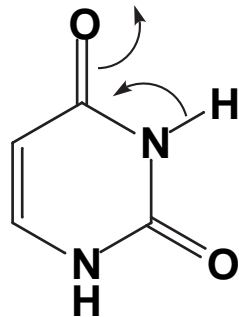
NAME: _____

1) Draw a G-C base pair. (If you do not know how the two bases come together, draw them separately for partial credit.)

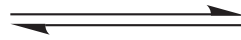
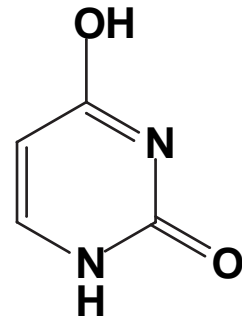


2) Draw the structure of uracil.

uracil (dominant form)



lactim tautomer



Bonus: Next to your structure of uracil, show the tautomerization reaction and the subsequent product formed.